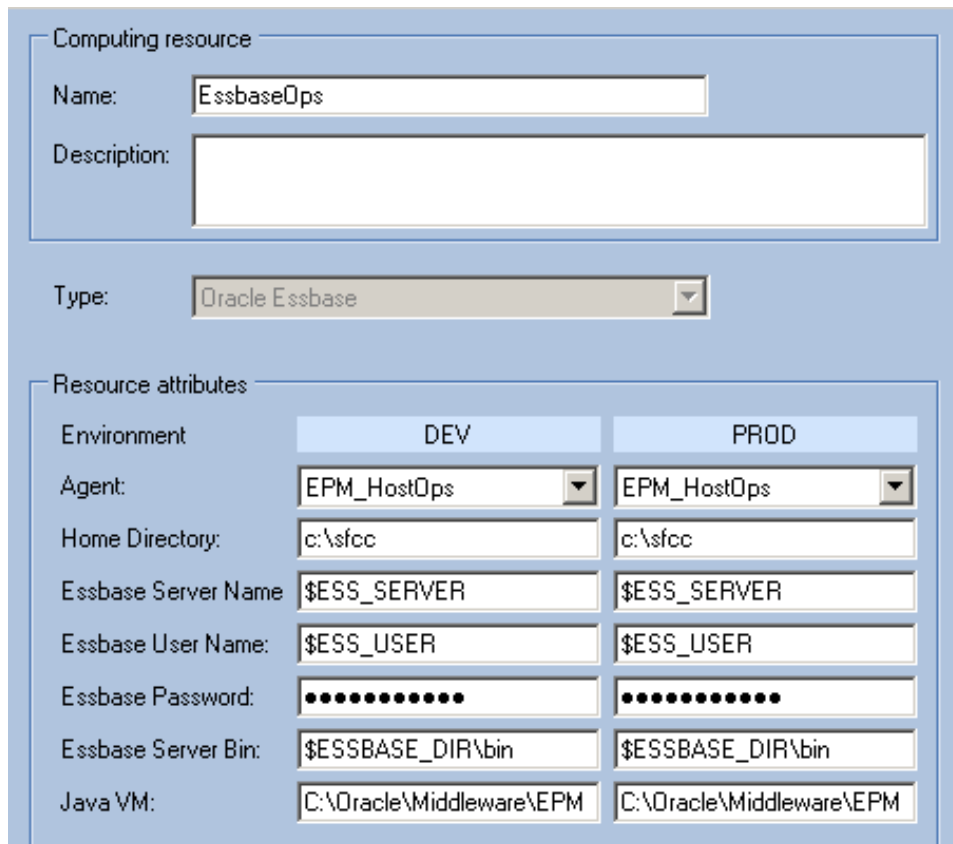


Automating Oracle Hyperion Essbase Tasks

Setting up Oracle Essbase Tasks with Star Finance Command Center

1) Setup the Essbase "Computing Resource"

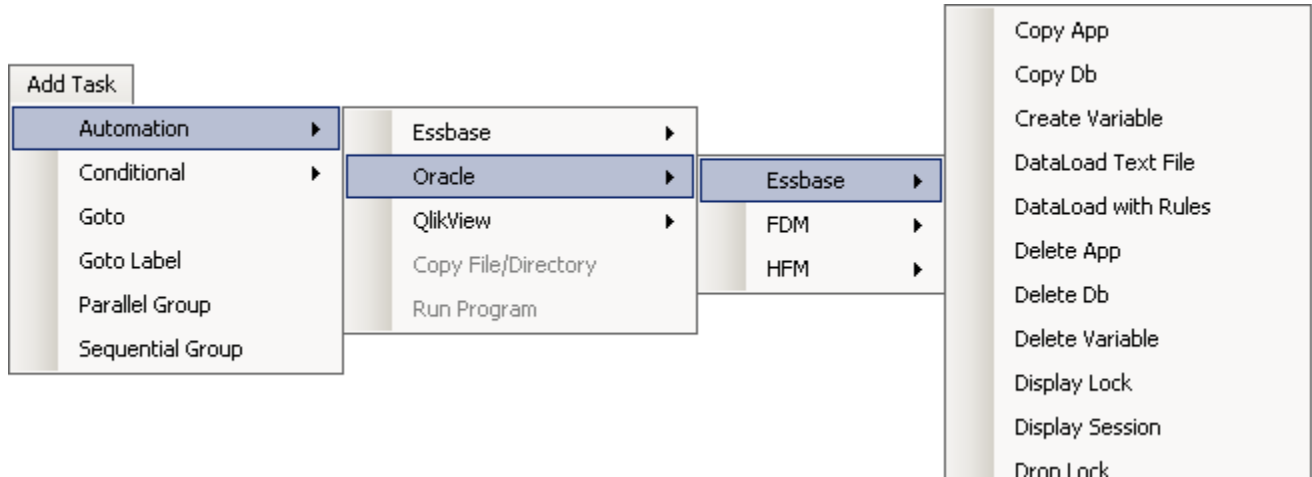
Use the connection parameters to natively connect to Oracle Essbase.



Computing resource		
Name:	EssbaseOps	
Description:		
Type:	Oracle Essbase	
Resource attributes		
Environment	DEV	PROD
Agent:	EPM_HostOps	EPM_HostOps
Home Directory:	c:\sfcc	c:\sfcc
Essbase Server Name	\$ESS_SERVER	\$ESS_SERVER
Essbase User Name:	\$ESS_USER	\$ESS_USER
Essbase Password:
Essbase Server Bin:	\$ESSBASE_DIR\bin	\$ESSBASE_DIR\bin
Java VM:	C:\Oracle\Middleware\EPM	C:\Oracle\Middleware\EPM

Automating Oracle Hyperion Essbase Tasks

2) Select an Essbase Task from the SFCC Menu



At the time of this document, the available tasks are as follows:

- **Copy App** – Copies a specified Essbase Application to a new one.
- **Copy DB** – Copies a specified Essbase Database to a new one.
- **Create Variable** – Creates a new Essbase Substitution Variable and sets a value.
- **Data Load** – Runs a Data Load of a specified file to a given Essbase Database.
- **Data Load with Rules** – Runs a Data Load of a specified file and data load rule to a given Essbase Database.
- **Data Load with Rules Log** – Runs a Data Load of a specified file and data load rule to a given Essbase Database with error logging.
- **Delete App** – Deletes a specified Essbase Application
- **Delete DB** – Deletes a specified Essbase Database.
- **Delete Variable** – Deletes a specified Substitution Variable.
- **Display Lock** – Displays block Lock information for the specified Essbase App/Database.
- **Display Session** – Displays active login Session information for the specified Essbase App/Database.
- **Drop Lock** – Removes any data block Locks for the specified Essbase App/Database.
- **Export Data** – Performs a high performance extract from a specified database.

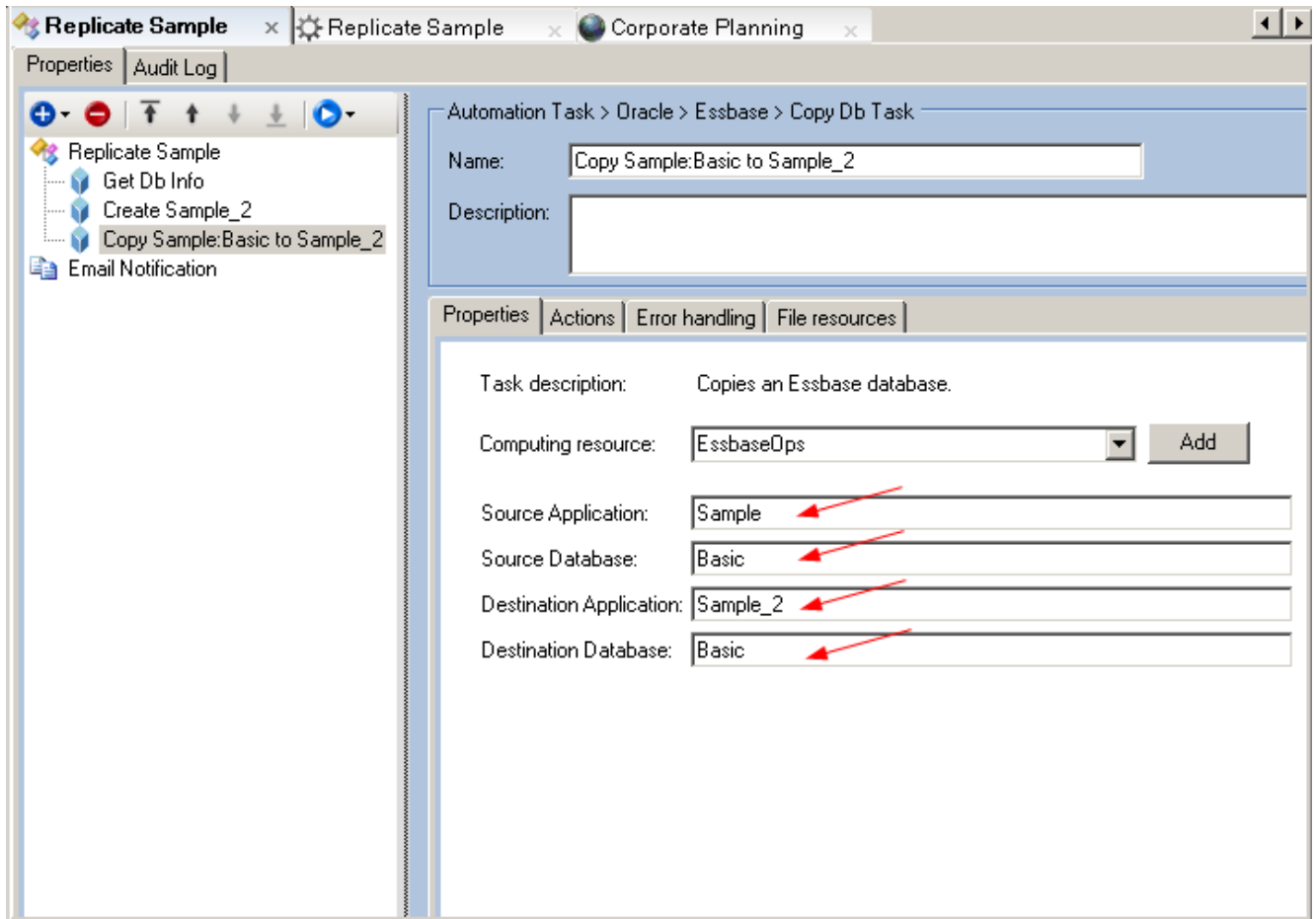
Automating Oracle Hyperion Essbase Tasks

- **Export Data (J)** – Performs a high performance extract using the Essbase Java interface.
- **Get DB Info** – Displays DB Information for the specified Essbase Database.
- **Grant Access** – Grants security Access level to the specified Essbase Database to a given user or group.
- **Grant Execute** – Grants security Access level to the specified Calc Script to a given user or group.
- **List Variables** – Displays the Substitution Variables for the specified Essbase App/Database.
- **Login Switch** – Enables or Disables connections to a specified Essbase Application.
- **Metadata Load** Loads dimensions from a specified source to a given Essbase Database.
- **Reset DB** – Clears all data and Linked Reporting Objects from a specified Essbase Database.
- **Run Calc File** – Runs a specified Calc Script file from a given location against an Essbase Database.
- **Run Calc Script** – Runs a specified Calc Script that is stored on the Essbase Server.
- **Run Calc String** – Runs a specified Calc Script that is stored in any file path on the Essbase Server.
- **Run Default Calc** – Runs the Default calc against a specified Essbase Database.
- **Run Report Script** – Runs a specified Report Script and outputs the results to a specified text file.
- **Set Default Calc** – Sets a Calculation String as the Default Calc for a given Database.
- **Start/Stop App** – Start a specified Essbase Application.
- **Update Variable** – Updates the value of a specified Substitution Variable.

Automating Oracle Hyperion Essbase Tasks

3) Sample Task #1: Copy Essbase Database

Insert parameters needed to perform the operation. In this example, the source and target Essbase databases are inserted:



Automating Oracle Hyperion Essbase Tasks

4) Run or schedule the process

See that Star Finance Command Center provides full error handling and email alerting in conjunction with running the process.

The screenshot displays the Star Finance Command Center interface. At the top, there are three tabs: 'Replicate Sample', 'Replicate Sample', and 'Corporate Planning'. Below the tabs, there are two buttons: 'DEV' and 'PROD'. The main area shows the details for the 'Replicate Sample' process:

- Process name: Replicate Sample
- Status: ✔ Completed
- Result: Completed successfully.
- Started: 1/23/2011 9:03:47 AM
- Completed: 1/23/2011 9:04:24 AM
- Last successful run: 1/23/2011 9:03:47 AM
- Next scheduled run: Not scheduled

On the right side of the process details, there are three buttons: a play button (Run), a stop button (Stop), and a refresh button (Refresh). Below these are two more buttons: 'Edit' and 'Schedule...'. Red arrows point from the 'Run' and 'Schedule...' buttons to the 'Start process: Replicate Sample' dialog box.

The 'Run details' tab is selected, showing a table of process steps:

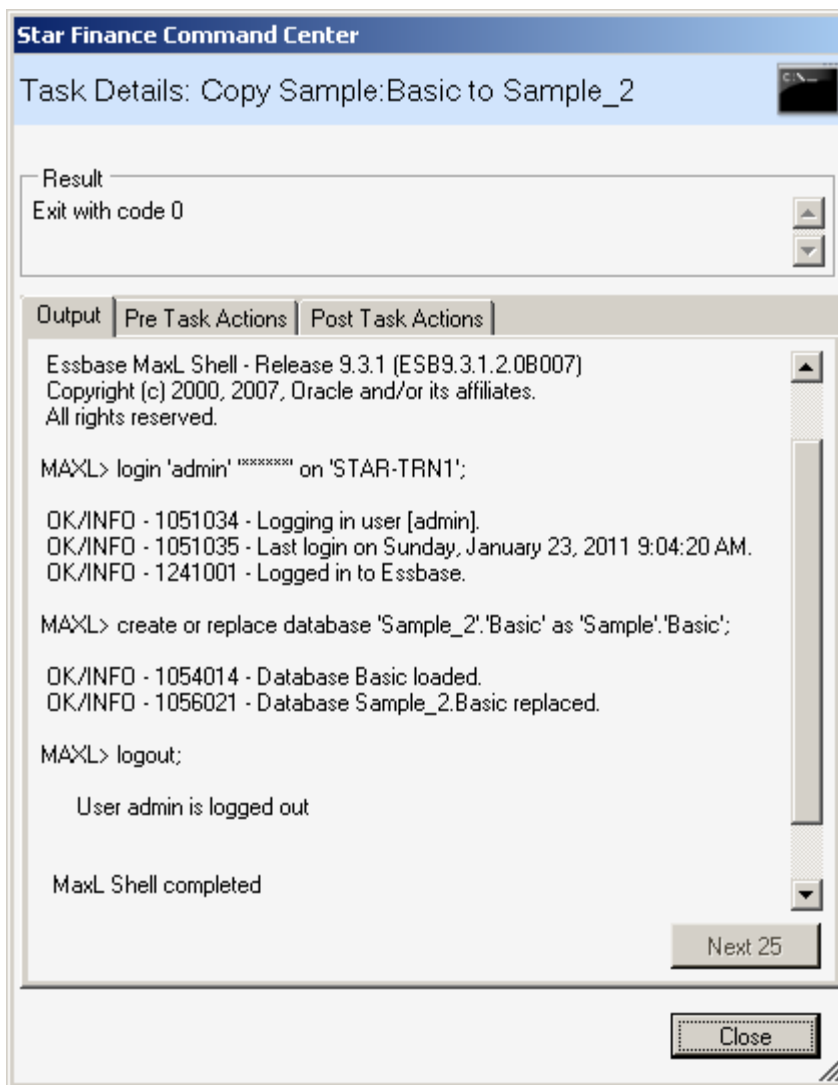
Replicate Sample	Status	Result	Exit code	Started	Comple
Get Db Info	✔ Completed	Exit with code 0	0	1/23/2011 9:03:47 AM	1/23/2011 9:03:47 AM
Create Sample_2	✔ Completed	Exit with code 0	0	1/23/2011 9:03:50 AM	1/23/2011 9:03:50 AM
Copy Sample:Basic to Sa...	✔ Completed	Exit with code 0	0	1/23/2011 9:04:19 AM	1/23/2011 9:04:19 AM

A dialog box titled 'Star Finance Command Center' is overlaid on the table. It contains the text 'Start process: Replicate Sample' and a gear icon. At the bottom of the dialog box, there are two buttons: 'Start' and 'Cancel'.

Automating Oracle Hyperion Essbase Tasks

5) See a real time event log of any running Task

In the example below, the output of the Essbase Database Copy task is displayed allowing an administrator or end-user to quickly see the results of a task without digging through log files on remote servers. Many of the Star Finance Command Center plug-in tasks leverage existing command line interfaces of the native product they interact with. For the Essbase plug-in, MaxL is the primary interface.

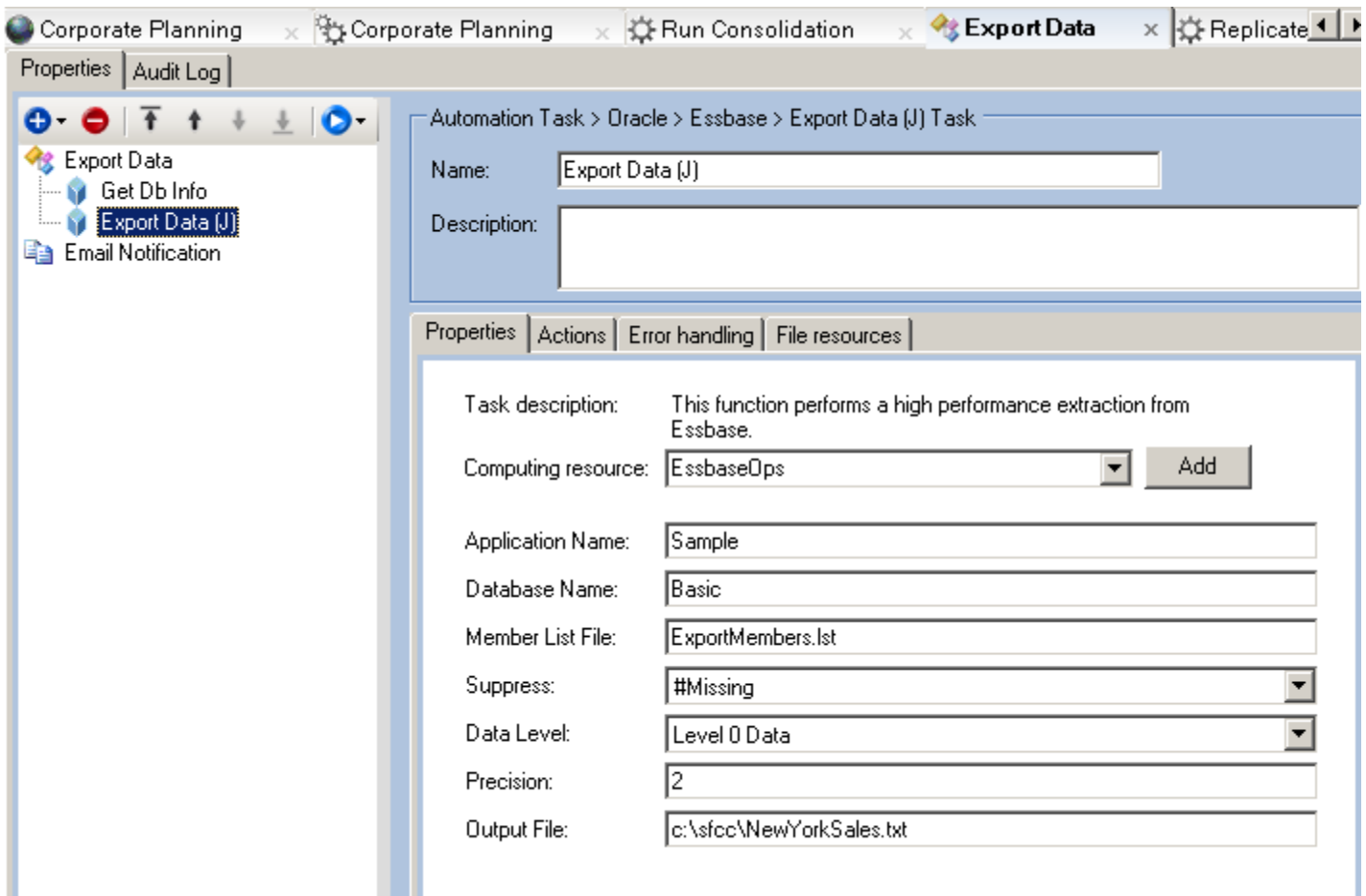


Automating Oracle Hyperion Essbase Tasks

6) Sample Task #2: Run a High-speed Essbase Export Task

Insert parameters needed to export data from an Essbase cube. Export options include the following:

- Member List File (example on the following page) – to tailor the scope of extraction
- Suppression options of None, Zeros, #Missing and #Missing and Zeros
- Export Level options of Level 0, All Data and Input Data (*ASO only supports Level 0*)
- Output precision
- Output File and Path

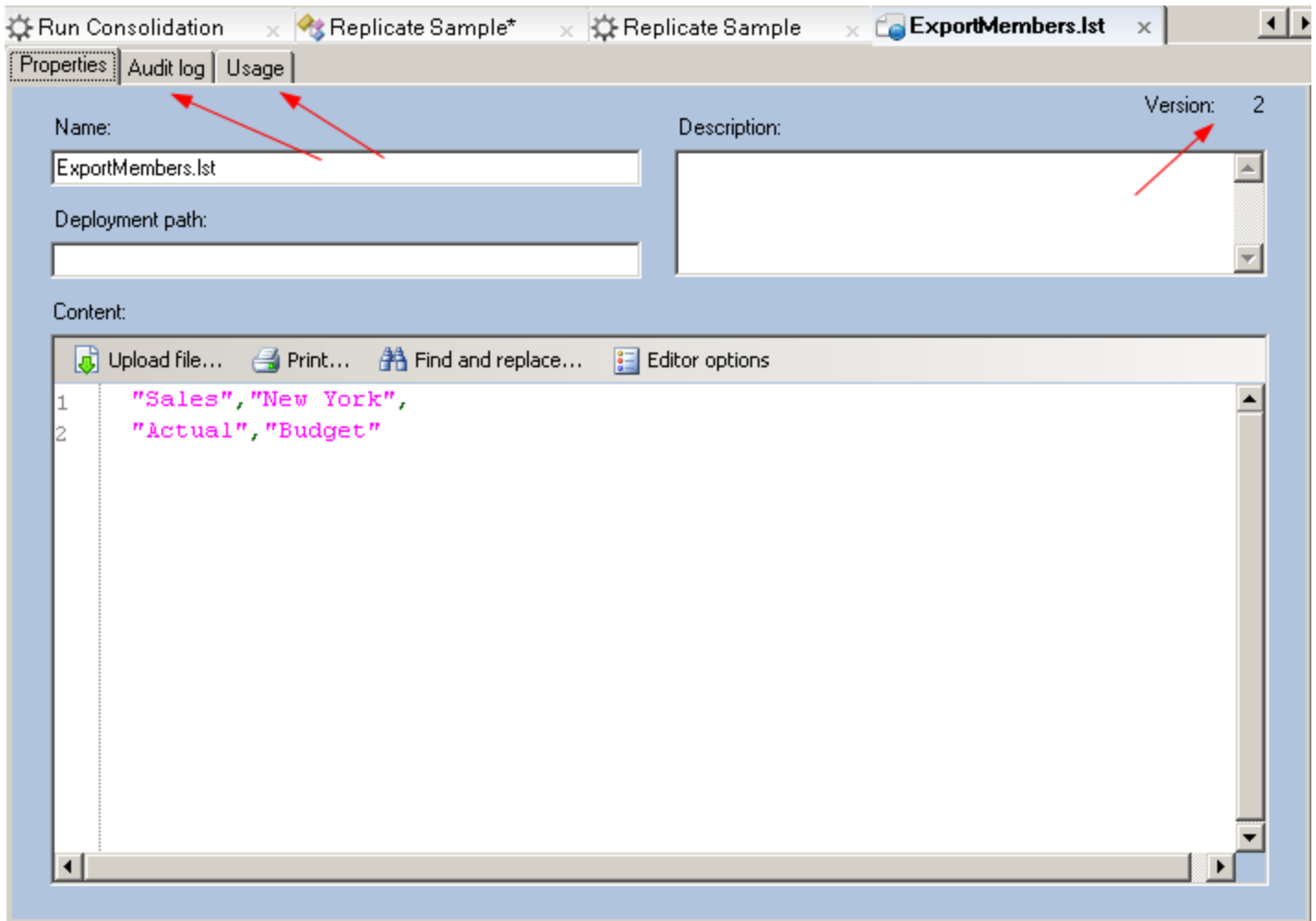


Full support for Essbase systems running on Windows and UNIX as well as Essbase versions 7.x, 9.x, 11.1.1.x and 11.1.2.x.

Automating Oracle Hyperion Essbase Tasks

7) Optionally setup an Export Member List and save as a Star Finance Command Center File Resource.

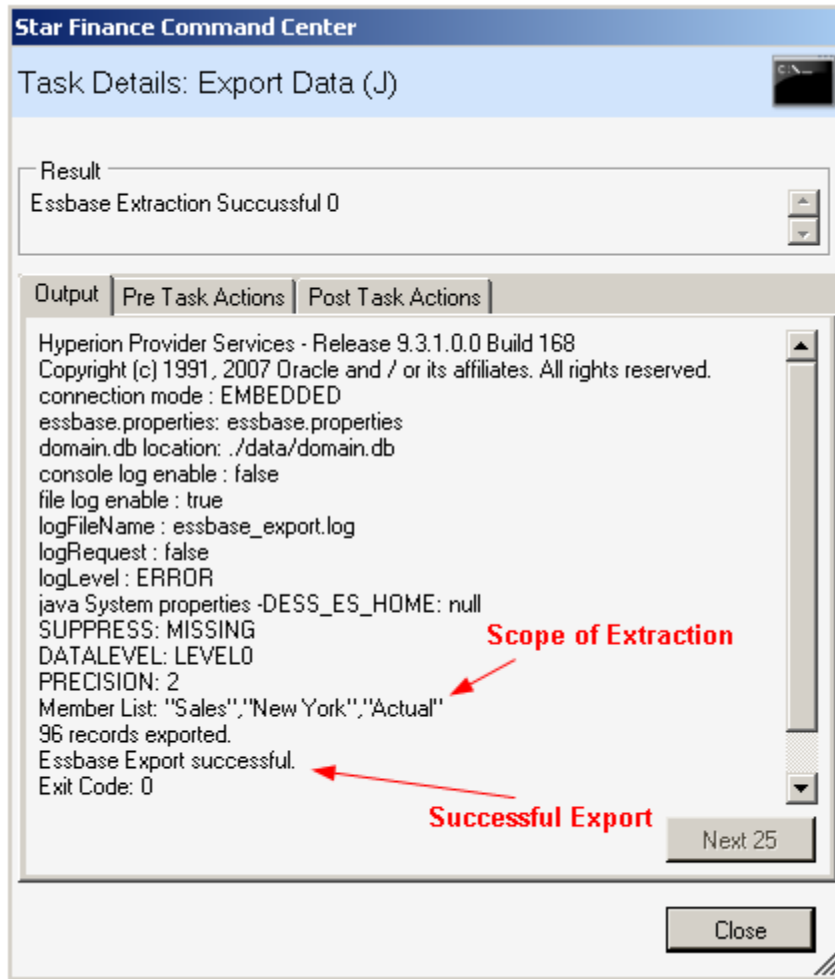
The list below sets the scope of the extraction to certain combination of Essbase members. Note that with the file resource stored in the Star Finance Command Center relational repository, automation can benefit from a file audit log, version control as well as usage details.



Automating Oracle Hyperion Essbase Tasks

8) Run the Process, where you can view output results from the Essbase Task

The example below illustrates the output from the Data Extraction. Note the scope of the extraction is clearly displayed.



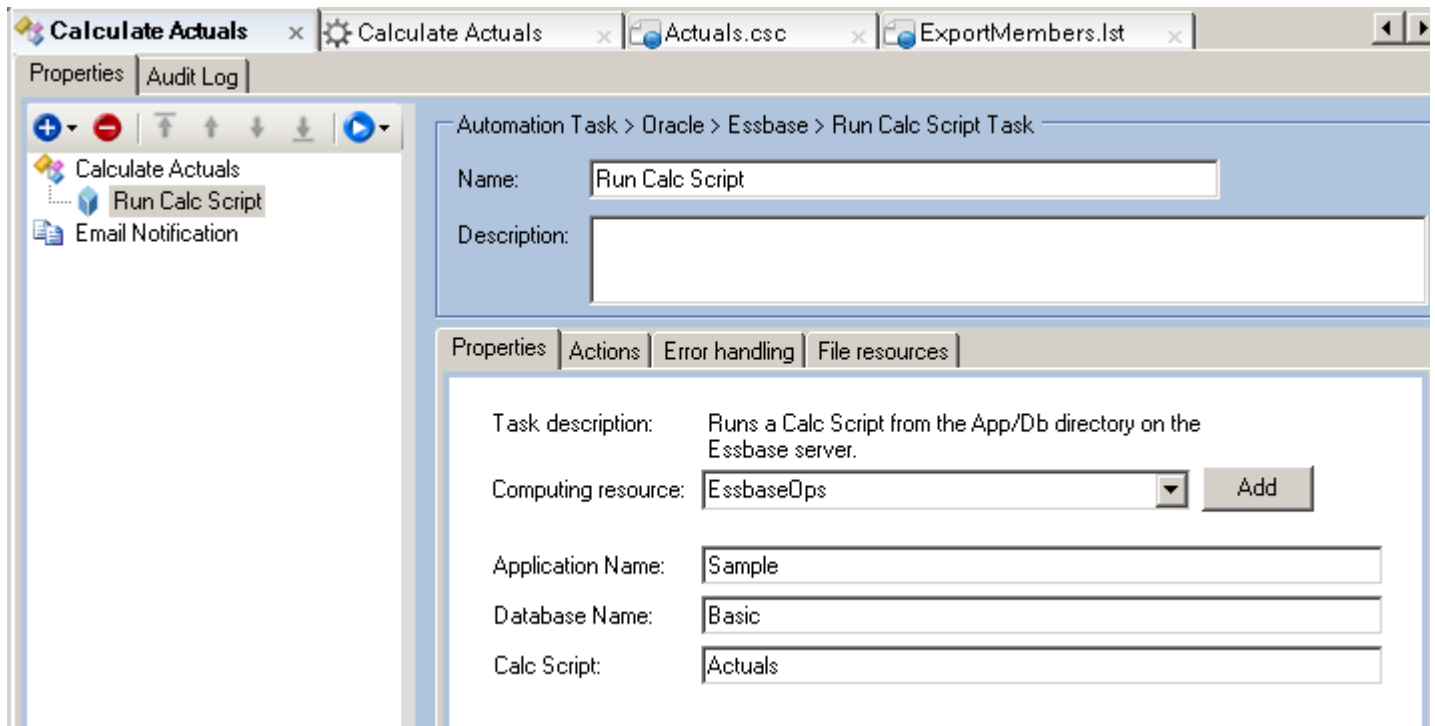
Export format is ideal for loading into other Essbase cubes or to relational targets via standard bulk load.

Sales	100-10	New York	Jan	Actual	677.0
Sales	100-10	New York	Feb	Actual	645.0
Sales	100-10	New York	Mar	Actual	675.0
Sales	100-10	New York	Apr	Actual	712.0
Sales	100-10	New York	May	Actual	756.0
Sales	100-10	New York	Jun	Actual	890.0
Sales	100-10	New York	Jul	Actual	912.0
Sales	100-10	New York	Aug	Actual	910.0
Sales	100-10	New York	Sep	Actual	790.0
Sales	100-10	New York	Oct	Actual	650.0
Sales	100-10	New York	Nov	Actual	623.0
Sales	100-10	New York	Dec	Actual	699.0

Automating Oracle Hyperion Essbase Tasks

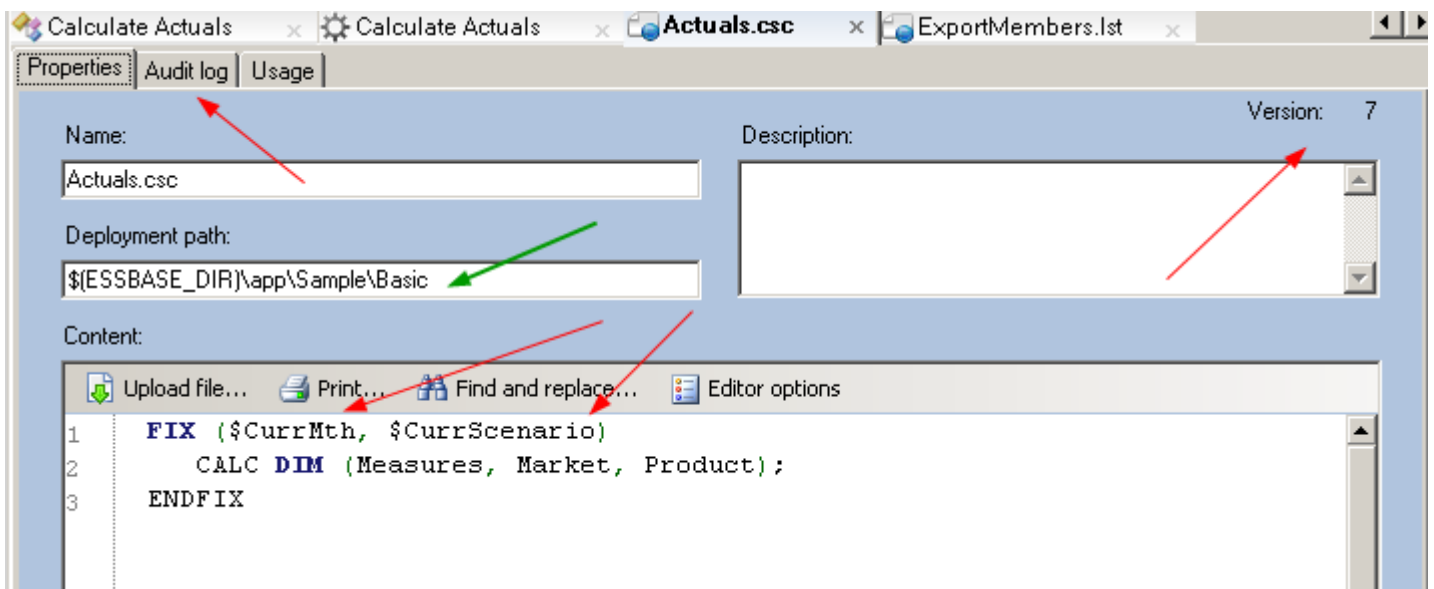
9) Sample Task #3: Run an Essbase Calc Script that is managed and is variable driven from the SFCC repository

This example highlights running a task and using a Star Finance Command Center file resource which in this case would be a calculation script.



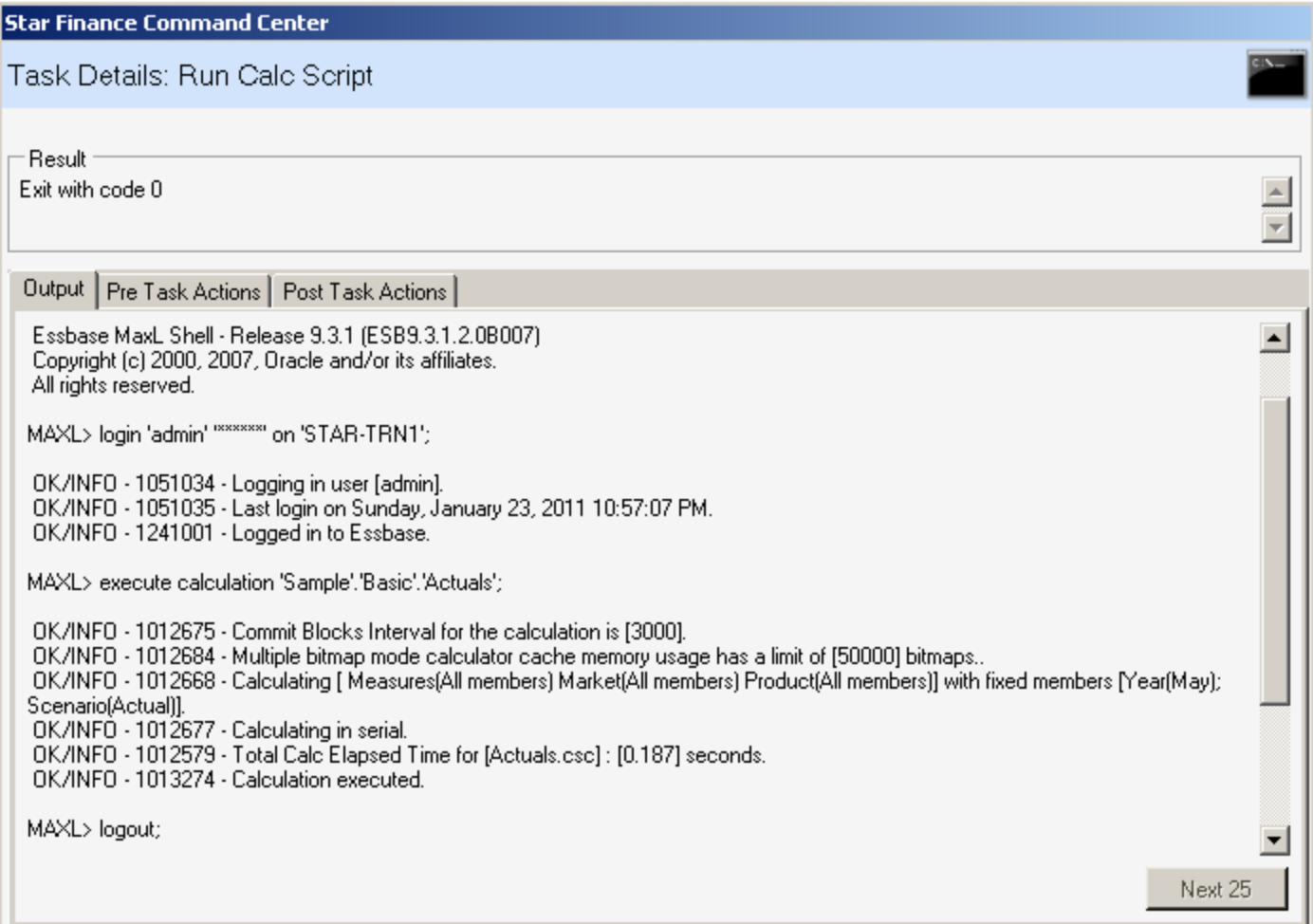
Automating Oracle Hyperion Essbase Tasks

Below is an example of management of an Essbase Calculation script in the file repository. Note the use of Star Finance Command Center variables directly in the script. Additionally, since it is a file resource stored in the Star Finance Command Center repository, it can take advantage of the audit log and version control. Lastly, note that by way of the Star Finance Command Center Server & Agent connection, any file can dynamically be deployed on any server (Windows / Linux / Unix), in any location via its Deployment Path.



Automating Oracle Hyperion Essbase Tasks

- 10) See the output from running the "Actuals" calculation script



The screenshot shows a window titled "Star Finance Command Center" with a sub-header "Task Details: Run Calc Script". Below this, there is a "Result" section showing "Exit with code 0". The main area is a scrollable "Output" pane with tabs for "Output", "Pre Task Actions", and "Post Task Actions". The output text is as follows:

```
Essbase MaxL Shell - Release 9.3.1 (ESB9.3.1.2.0B007)
Copyright (c) 2000, 2007, Oracle and/or its affiliates.
All rights reserved.

MAXL> login 'admin' '*****' on 'STAR-TRN1';

OK/INFO - 1051034 - Logging in user [admin].
OK/INFO - 1051035 - Last login on Sunday, January 23, 2011 10:57:07 PM.
OK/INFO - 1241001 - Logged in to Essbase.

MAXL> execute calculation 'Sample'.Basic.'Actuals';

OK/INFO - 1012675 - Commit Blocks Interval for the calculation is [3000].
OK/INFO - 1012684 - Multiple bitmap mode calculator cache memory usage has a limit of [50000] bitmaps..
OK/INFO - 1012668 - Calculating [ Measures(All members) Market(All members) Product(All members)] with fixed members [Year(May);
Scenario(Actual)].
OK/INFO - 1012677 - Calculating in serial.
OK/INFO - 1012579 - Total Calc Elapsed Time for [Actuals.csc] : [0.187] seconds.
OK/INFO - 1013274 - Calculation executed.

MAXL> logout;
```

A "Next 25" button is visible at the bottom right of the output pane.